

Project:
Offshore_Beta

Licensed user:
Karlstad Modern Energy AB
Lantvårnsgatan 8
SE-65221 Karlstad
+46 702185064
Niklas Sondell / niklas.sondell@modernenergy.se
Calculated:
2021-09-13 15:08/3.5.552

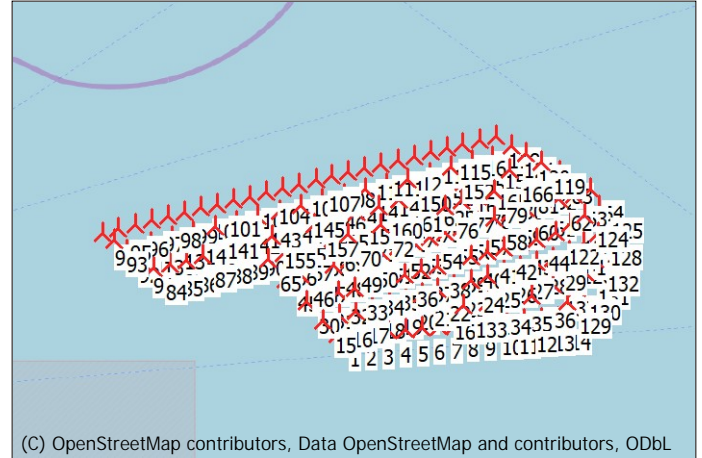
DECI BEL - Main Result

Calculation: Danish Offshore

Noise calculation model:
Danish 2019

The calculation is based on "BEK nr 135 af 07/02/2019" from the Danish Environmental Agency.
For wind turbines classified as offshore wind turbines multiple reflections (Lm) are applied.

All coordinates are in
Swedish UTM 33-SWREF99 (SE)



Scale 1:750 000

▲ New WTG

WTGs

Easting	Northing	Z	Row data/Description	WTG type			Noise data									
				Valid	Manufact.	Type-generator	Power, rated	Rotor diameter	Hub height	Offshore	Creator	Name	First wind speed	LwaRef	Last wind speed	LwaRef
[m]						[kW]	[m]	[m]				[m/s]	[dB(A)]	[m/s]	[dB(A)]	
1	566 743	6 153 521	-78.4 MODERNENERGY ME26...	Yes	MODERNENERGY	ME263-20-20 000	20 000	263.0	160.0	Yes	USER	115.4	6.0	115.2	8.0	115.2
2	568 434	6 153 680	-77.6 MODERNENERGY ME26...	Yes	MODERNENERGY	ME263-20-20 000	20 000	263.0	160.0	Yes	USER	115.4	6.0	115.2	8.0	115.2
3	570 125	6 153 840	-76.4 MODERNENERGY ME26...	Yes	MODERNENERGY	ME263-20-20 000	20 000	263.0	160.0	Yes	USER	115.4	6.0	115.2	8.0	115.2
4	571 815	6 153 999	-75.2 MODERNENERGY ME26...	Yes	MODERNENERGY	ME263-20-20 000	20 000	263.0	160.0	Yes	USER	115.4	6.0	115.2	8.0	115.2
5	573 506	6 154 158	-77.1 MODERNENERGY ME26...	Yes	MODERNENERGY	ME263-20-20 000	20 000	263.0	160.0	Yes	USER	115.4	6.0	115.2	8.0	115.2
6	575 197	6 154 317	-75.5 MODERNENERGY ME26...	Yes	MODERNENERGY	ME263-20-20 000	20 000	263.0	160.0	Yes	USER	115.4	6.0	115.2	8.0	115.2
7	576 887	6 154 476	-73.4 MODERNENERGY ME26...	Yes	MODERNENERGY	ME263-20-20 000	20 000	263.0	160.0	Yes	USER	115.4	6.0	115.2	8.0	115.2
8	578 578	6 154 635	-73.9 MODERNENERGY ME26...	Yes	MODERNENERGY	ME263-20-20 000	20 000	263.0	160.0	Yes	USER	115.4	6.0	115.2	8.0	115.2
9	580 269	6 154 794	-74.1 MODERNENERGY ME26...	Yes	MODERNENERGY	ME263-20-20 000	20 000	263.0	160.0	Yes	USER	115.4	6.0	115.2	8.0	115.2
10	581 960	6 154 954	-72.8 MODERNENERGY ME26...	Yes	MODERNENERGY	ME263-20-20 000	20 000	263.0	160.0	Yes	USER	115.4	6.0	115.2	8.0	115.2
11	583 651	6 155 113	-71.1 MODERNENERGY ME26...	Yes	MODERNENERGY	ME263-20-20 000	20 000	263.0	160.0	Yes	USER	115.4	6.0	115.2	8.0	115.2
12	585 341	6 155 272	-71.3 MODERNENERGY ME26...	Yes	MODERNENERGY	ME263-20-20 000	20 000	263.0	160.0	Yes	USER	115.4	6.0	115.2	8.0	115.2
13	587 032	6 155 431	-70.8 MODERNENERGY ME26...	Yes	MODERNENERGY	ME263-20-20 000	20 000	263.0	160.0	Yes	USER	115.4	6.0	115.2	8.0	115.2
14	588 723	6 155 590	-68.8 MODERNENERGY ME26...	Yes	MODERNENERGY	ME263-20-20 000	20 000	263.0	160.0	Yes	USER	115.4	6.0	115.2	8.0	115.2
15	585 292	6 154 927	-79.0 MODERNENERGY ME26...	Yes	MODERNENERGY	ME263-20-20 000	20 000	263.0	160.0	Yes	USER	115.4	6.0	115.2	8.0	115.2
16	566 924	6 155 395	-78.1 MODERNENERGY ME26...	Yes	MODERNENERGY	ME263-20-20 000	20 000	263.0	160.0	Yes	USER	115.4	6.0	115.2	8.0	115.2
17	568 556	6 155 864	-78.6 MODERNENERGY ME26...	Yes	MODERNENERGY	ME263-20-20 000	20 000	263.0	160.0	Yes	USER	115.4	6.0	115.2	8.0	115.2
18	570 188	6 156 332	-76.4 MODERNENERGY ME26...	Yes	MODERNENERGY	ME263-20-20 000	20 000	263.0	160.0	Yes	USER	115.4	6.0	115.2	8.0	115.2
19	571 820	6 156 800	-76.3 MODERNENERGY ME26...	Yes	MODERNENERGY	ME263-20-20 000	20 000	263.0	160.0	Yes	USER	115.4	6.0	115.2	8.0	115.2
20	573 453	6 157 269	-76.9 MODERNENERGY ME26...	Yes	MODERNENERGY	ME263-20-20 000	20 000	263.0	160.0	Yes	USER	115.4	6.0	115.2	8.0	115.2
21	575 085	6 157 737	-76.9 MODERNENERGY ME26...	Yes	MODERNENERGY	ME263-20-20 000	20 000	263.0	160.0	Yes	USER	115.4	6.0	115.2	8.0	115.2
22	576 717	6 158 206	-75.3 MODERNENERGY ME26...	Yes	MODERNENERGY	ME263-20-20 000	20 000	263.0	160.0	Yes	USER	115.4	6.0	115.2	8.0	115.2
23	578 350	6 158 674	-73.9 MODERNENERGY ME26...	Yes	MODERNENERGY	ME263-20-20 000	20 000	263.0	160.0	Yes	USER	115.4	6.0	115.2	8.0	115.2
24	579 982	6 159 143	-72.3 MODERNENERGY ME26...	Yes	MODERNENERGY	ME263-20-20 000	20 000	263.0	160.0	Yes	USER	115.4	6.0	115.2	8.0	115.2
25	581 615	6 159 611	-71.1 MODERNENERGY ME26...	Yes	MODERNENERGY	ME263-20-20 000	20 000	263.0	160.0	Yes	USER	115.4	6.0	115.2	8.0	115.2
26	583 247	6 160 079	-69.5 MODERNENERGY ME26...	Yes	MODERNENERGY	ME263-20-20 000	20 000	263.0	160.0	Yes	USER	115.4	6.0	115.2	8.0	115.2
27	584 879	6 160 548	-69.3 MODERNENERGY ME26...	Yes	MODERNENERGY	ME263-20-20 000	20 000	263.0	160.0	Yes	USER	115.4	6.0	115.2	8.0	115.2
28	586 512	6 161 016	-68.9 MODERNENERGY ME26...	Yes	MODERNENERGY	ME263-20-20 000	20 000	263.0	160.0	Yes	USER	115.4	6.0	115.2	8.0	115.2
29	588 144	6 161 485	-68.3 MODERNENERGY ME26...	Yes	MODERNENERGY	ME263-20-20 000	20 000	263.0	160.0	Yes	USER	115.4	6.0	115.2	8.0	115.2
30	563 574	6 156 803	-80.9 MODERNENERGY ME26...	Yes	MODERNENERGY	ME263-20-20 000	20 000	263.0	160.0	Yes	USER	115.4	6.0	115.2	8.0	115.2
31	565 206	6 157 271	-78.1 MODERNENERGY ME26...	Yes	MODERNENERGY	ME263-20-20 000	20 000	263.0	160.0	Yes	USER	115.4	6.0	115.2	8.0	115.2
32	566 838	6 157 740	-77.1 MODERNENERGY ME26...	Yes	MODERNENERGY	ME263-20-20 000	20 000	263.0	160.0	Yes	USER	115.4	6.0	115.2	8.0	115.2
33	568 471	6 158 208	-76.2 MODERNENERGY ME26...	Yes	MODERNENERGY	ME263-20-20 000	20 000	263.0	160.0	Yes	USER	115.4	6.0	115.2	8.0	115.2
34	570 103	6 158 677	-74.5 MODERNENERGY ME26...	Yes	MODERNENERGY	ME263-20-20 000	20 000	263.0	160.0	Yes	USER	115.4	6.0	115.2	8.0	115.2
35	571 735	6 159 145	-75.7 MODERNENERGY ME26...	Yes	MODERNENERGY	ME263-20-20 000	20 000	263.0	160.0	Yes	USER	115.4	6.0	115.2	8.0	115.2
36	573 367	6 159 613	-76.0 MODERNENERGY ME26...	Yes	MODERNENERGY	ME263-20-20 000	20 000	263.0	160.0	Yes	USER	115.4	6.0	115.2	8.0	115.2
37	575 000	6 160 082	-75.1 MODERNENERGY ME26...	Yes	MODERNENERGY	ME263-20-20 000	20 000	263.0	160.0	Yes	USER	115.4	6.0	115.2	8.0	115.2
38	576 632	6 160 550	-73.6 MODERNENERGY ME26...	Yes	MODERNENERGY	ME263-20-20 000	20 000	263.0	160.0	Yes	USER	115.4	6.0	115.2	8.0	115.2
39	578 264	6 161 019	-72.4 MODERNENERGY ME26...	Yes	MODERNENERGY	ME263-20-20 000	20 000	263.0	160.0	Yes	USER	115.4	6.0	115.2	8.0	115.2
40	579 897	6 161 487	-71.9 MODERNENERGY ME26...	Yes	MODERNENERGY	ME263-20-20 000	20 000	263.0	160.0	Yes	USER	115.4	6.0	115.2	8.0	115.2
41	581 529	6 161 956	-71.5 MODERNENERGY ME26...	Yes	MODERNENERGY	ME263-20-20 000	20 000	263.0	160.0	Yes	USER	115.4	6.0	115.2	8.0	115.2
42	583 161	6 162 424	-69.5 MODERNENERGY ME26...	Yes	MODERNENERGY	ME263-20-20 000	20 000	263.0	160.0	Yes	USER	115.4	6.0	115.2	8.0	115.2
43	584 794	6 162 893	-68.0 MODERNENERGY ME26...	Yes	MODERNENERGY	ME263-20-20 000	20 000	263.0	160.0	Yes	USER	115.4	6.0	115.2	8.0	115.2
44	586 426	6 163 361	-65.8 MODERNENERGY ME26...	Yes	MODERNENERGY	ME263-20-20 000	20 000	263.0	160.0	Yes	USER	115.4	6.0	115.2	8.0	115.2
45	561 465	6 158 892	-77.7 MODERNENERGY ME26...	Yes	MODERNENERGY	ME263-20-20 000	20 000	263.0	160.0	Yes	USER	115.4	6.0	115.2	8.0	115.2
46	563 057	6 159 391	-77.3 MODERNENERGY ME26...	Yes	MODERNENERGY	ME263-20-20 000	20 000	263.0	160.0	Yes	USER	115.4	6.0	115.2	8.0	115.2
47	564 648	6 159 890	-76.1 MODERNENERGY ME26...	Yes	MODERNENERGY	ME263-20-20 000	20 000	263.0	160.0	Yes	USER	115.4	6.0	115.2	8.0	115.2

To be continued on next page...

DECIBEL - Main Result

Calculation: Danish Offshore

...continued from previous page

Easting	Northing	Z	Row data/Description	WTG type			Power, rated	Rotor diameter	Hub height	Noise data							
				Valid	Manufact.	Type-generator				Offshore	Creator	Name	First wind speed	LwaRef	Last wind speed	LwaRef	
[m]						[kW]	[m]	[m]									
												[m/s]	[dB(A)]	[m/s]	[dB(A)]		
122	588 297	6 164 145	-61.0	MODERNENERGY ME26...	Yes	MODERNENERGY	ME263-20-20 000	20 000	263.0	160.0	Yes	USER	115.4	6.0	115.2	8.0	115.2
123	589 748	6 165 027	-55.0	MODERNENERGY ME26...	Yes	MODERNENERGY	ME263-20-20 000	20 000	263.0	160.0	Yes	USER	115.4	6.0	115.2	8.0	115.2
124	591 200	6 165 909	-58.1	MODERNENERGY ME26...	Yes	MODERNENERGY	ME263-20-20 000	20 000	263.0	160.0	Yes	USER	115.4	6.0	115.2	8.0	115.2
125	592 651	6 166 791	-58.7	MODERNENERGY ME26...	Yes	MODERNENERGY	ME263-20-20 000	20 000	263.0	160.0	Yes	USER	115.4	6.0	115.2	8.0	115.2
126	589 691	6 162 212	-66.6	MODERNENERGY ME26...	Yes	MODERNENERGY	ME263-20-20 000	20 000	263.0	160.0	Yes	USER	115.4	6.0	115.2	8.0	115.2
127	591 143	6 163 094	-64.9	MODERNENERGY ME26...	Yes	MODERNENERGY	ME263-20-20 000	20 000	263.0	160.0	Yes	USER	115.4	6.0	115.2	8.0	115.2
128	592 594	6 163 976	-63.6	MODERNENERGY ME26...	Yes	MODERNENERGY	ME263-20-20 000	20 000	263.0	160.0	Yes	USER	115.4	6.0	115.2	8.0	115.2
129	589 635	6 157 186	-69.2	MODERNENERGY ME26...	Yes	MODERNENERGY	ME263-20-20 000	20 000	263.0	160.0	Yes	USER	115.4	6.0	115.2	8.0	115.2
130	590 514	6 158 640	-68.8	MODERNENERGY ME26...	Yes	MODERNENERGY	ME263-20-20 000	20 000	263.0	160.0	Yes	USER	115.4	6.0	115.2	8.0	115.2
131	591 392	6 160 093	-69.1	MODERNENERGY ME26...	Yes	MODERNENERGY	ME263-20-20 000	20 000	263.0	160.0	Yes	USER	115.4	6.0	115.2	8.0	115.2
132	592 271	6 161 546	-66.8	MODERNENERGY ME26...	Yes	MODERNENERGY	ME263-20-20 000	20 000	263.0	160.0	Yes	USER	115.4	6.0	115.2	8.0	115.2
133	579 348	6 156 629	-73.4	MODERNENERGY ME26...	Yes	MODERNENERGY	ME263-20-20 000	20 000	263.0	160.0	Yes	USER	115.4	6.0	115.2	8.0	115.2
134	581 638	6 157 017	-72.8	MODERNENERGY ME26...	Yes	MODERNENERGY	ME263-20-20 000	20 000	263.0	160.0	Yes	USER	115.4	6.0	115.2	8.0	115.2
135	583 843	6 157 275	-70.6	MODERNENERGY ME26...	Yes	MODERNENERGY	ME263-20-20 000	20 000	263.0	160.0	Yes	USER	115.4	6.0	115.2	8.0	115.2
136	586 085	6 157 740	-71.3	MODERNENERGY ME26...	Yes	MODERNENERGY	ME263-20-20 000	20 000	263.0	160.0	Yes	USER	115.4	6.0	115.2	8.0	115.2
137	588 154	6 158 935	-69.8	MODERNENERGY ME26...	Yes	MODERNENERGY	ME263-20-20 000	20 000	263.0	160.0	Yes	USER	115.4	6.0	115.2	8.0	115.2
138	548 047	6 162 395	-71.2	MODERNENERGY ME26...	Yes	MODERNENERGY	ME263-20-20 000	20 000	263.0	160.0	Yes	USER	115.4	6.0	115.2	8.0	115.2
139	550 172	6 162 954	-71.1	MODERNENERGY ME26...	Yes	MODERNENERGY	ME263-20-20 000	20 000	263.0	160.0	Yes	USER	115.4	6.0	115.2	8.0	115.2
140	552 297	6 163 512	-73.4	MODERNENERGY ME26...	Yes	MODERNENERGY	ME263-20-20 000	20 000	263.0	160.0	Yes	USER	115.4	6.0	115.2	8.0	115.2
141	554 422	6 164 071	-74.4	MODERNENERGY ME26...	Yes	MODERNENERGY	ME263-20-20 000	20 000	263.0	160.0	Yes	USER	115.4	6.0	115.2	8.0	115.2
142	556 547	6 164 629	-73.0	MODERNENERGY ME26...	Yes	MODERNENERGY	ME263-20-20 000	20 000	263.0	160.0	Yes	USER	115.4	6.0	115.2	8.0	115.2
143	558 672	6 165 188	-74.4	MODERNENERGY ME26...	Yes	MODERNENERGY	ME263-20-20 000	20 000	263.0	160.0	Yes	USER	115.4	6.0	115.2	8.0	115.2
144	560 797	6 165 746	-73.9	MODERNENERGY ME26...	Yes	MODERNENERGY	ME263-20-20 000	20 000	263.0	160.0	Yes	USER	115.4	6.0	115.2	8.0	115.2
145	562 923	6 166 305	-72.3	MODERNENERGY ME26...	Yes	MODERNENERGY	ME263-20-20 000	20 000	263.0	160.0	Yes	USER	115.4	6.0	115.2	8.0	115.2
146	565 048	6 166 863	-72.0	MODERNENERGY ME26...	Yes	MODERNENERGY	ME263-20-20 000	20 000	263.0	160.0	Yes	USER	115.4	6.0	115.2	8.0	115.2
147	567 173	6 167 422	-71.0	MODERNENERGY ME26...	Yes	MODERNENERGY	ME263-20-20 000	20 000	263.0	160.0	Yes	USER	115.4	6.0	115.2	8.0	115.2
148	569 299	6 167 981	-70.4	MODERNENERGY ME26...	Yes	MODERNENERGY	ME263-20-20 000	20 000	263.0	160.0	Yes	USER	115.4	6.0	115.2	8.0	115.2
149	571 424	6 168 539	-70.5	MODERNENERGY ME26...	Yes	MODERNENERGY	ME263-20-20 000	20 000	263.0	160.0	Yes	USER	115.4	6.0	115.2	8.0	115.2
150	573 549	6 169 098	-69.6	MODERNENERGY ME26...	Yes	MODERNENERGY	ME263-20-20 000	20 000	263.0	160.0	Yes	USER	115.4	6.0	115.2	8.0	115.2
151	575 675	6 169 657	-69.5	MODERNENERGY ME26...	Yes	MODERNENERGY	ME263-20-20 000	20 000	263.0	160.0	Yes	USER	115.4	6.0	115.2	8.0	115.2
152	577 798	6 170 345	-68.3	MODERNENERGY ME26...	Yes	MODERNENERGY	ME263-20-20 000	20 000	263.0	160.0	Yes	USER	115.4	6.0	115.2	8.0	115.2
153	579 923	6 170 946	-68.2	MODERNENERGY ME26...	Yes	MODERNENERGY	ME263-20-20 000	20 000	263.0	160.0	Yes	USER	115.4	6.0	115.2	8.0	115.2
154	581 920	6 171 417	-68.7	MODERNENERGY ME26...	Yes	MODERNENERGY	ME263-20-20 000	20 000	263.0	160.0	Yes	USER	115.4	6.0	115.2	8.0	115.2
155	560 106	6 163 234	-76.1	MODERNENERGY ME26...	Yes	MODERNENERGY	ME263-20-20 000	20 000	263.0	160.0	Yes	USER	115.4	6.0	115.2	8.0	115.2
156	562 213	6 163 860	-74.3	MODERNENERGY ME26...	Yes	MODERNENERGY	ME263-20-20 000	20 000	263.0	160.0	Yes	USER	115.4	6.0	115.2	8.0	115.2
157	564 320	6 164 485	-73.8	MODERNENERGY ME26...	Yes	MODERNENERGY	ME263-20-20 000	20 000	263.0	160.0	Yes	USER	115.4	6.0	115.2	8.0	115.2
158	566 426	6 165 110	-73.3	MODERNENERGY ME26...	Yes	MODERNENERGY	ME263-20-20 000	20 000	263.0	160.0	Yes	USER	115.4	6.0	115.2	8.0	115.2
159	568 533	6 165 735	-71.9	MODERNENERGY ME26...	Yes	MODERNENERGY	ME263-20-20 000	20 000	263.0	160.0	Yes	USER	115.4	6.0	115.2	8.0	115.2
160	570 640	6 166 361	-72.0	MODERNENERGY ME26...	Yes	MODERNENERGY	ME263-20-20 000	20 000	263.0	160.0	Yes	USER	115.4	6.0	115.2	8.0	115.2
161	572 746	6 166 986	-70.9	MODERNENERGY ME26...	Yes	MODERNENERGY	ME263-20-20 000	20 000	263.0	160.0	Yes	USER	115.4	6.0	115.2	8.0	115.2
162	574 853	6 167 611	-70.5	MODERNENERGY ME26...	Yes	MODERNENERGY	ME263-20-20 000	20 000	263.0	160.0	Yes	USER	115.4	6.0	115.2	8.0	115.2
163	576 960	6 168 237	-70.0	MODERNENERGY ME26...	Yes	MODERNENERGY	ME263-20-20 000	20 000	263.0	160.0	Yes	USER	115.4	6.0	115.2	8.0	115.2
164	579 067	6 168 862	-69.2	MODERNENERGY ME26...	Yes	MODERNENERGY	ME263-20-20 000	20 000	263.0	160.0	Yes	USER	115.4	6.0	115.2	8.0	115.2
165	581 188	6 169 404	-69.0	MODERNENERGY ME26...	Yes	MODERNENERGY	ME263-20-20 000	20 000	263.0	160.0	Yes	USER	115.4	6.0	115.2	8.0	115.2
166	583 650	6 170 170	-70.8	MODERNENERGY ME26...	Yes	MODERNENERGY	ME263-20-20 000	20 000	263.0	160.0	Yes	USER	115.4	6.0	115.2	8.0	115.2
167	577 113	6 156 359	-73.5	MODERNENERGY ME26...	Yes	MODERNENERGY	ME263-20-20 000	20 000	263.0	160.0	Yes	USER	115.4	6.0	115.2	8.0	115.2

DECI BEL - Assumptions for noise calculation

Calculation: Danish Offshore

Noise calculation model:

Danish 2019

Wind speed (in 10 m height):

6.0 m/s - 8.0 m/s, step 2.0 m/s

Terrain reduction:

-1.5 dB(A) Onshore

-3 dB(A) Offshore

Meteorological coefficient, CO:

0.0 dB

Type of demand in calculation:

1: WTG noise is compared to demand (DK, DE, SE, NL etc.)

Noise values in calculation:

All noise values are mean values (Lwa) (Normal)

Pure tones:

Pure tones penalty is added to total noise impact at receptors

Noise sensitive area

Height above ground level, when no value in NSA object:

1.5 m; Don't allow override of model height with height from NSA object

Uncertainty margin:

0.0 dB; Uncertainty margin in NSA has priority

Deviation from "official" noise demands. Negative is more restrictive, positive is less restrictive.:

0.0 dB(A)

Octave data required

Frequency dependent air absorption

63	125	250	500	1 000	2 000	4 000	8 000
[dB/km]	[dB/km]	[dB/km]	[dB/km]	[dB/km]	[dB/km]	[dB/km]	[dB/km]
0.11	0.38	1.02	2.00	3.60	8.80	29.00	104.50

For wind turbines classified as offshore wind turbines multiple reflections (Lm) are applied.

Area object used for water areas: Area object (Roughness): REGIONS_Offshore_Beta_1.w2r (2): 0.0000m(cl,0,0) Open sea

All coordinates are in

Swedish UTM 33-SWREF99 (SE)

WTG: MODERNENERGY ME263-20 20000 263.0 IO!

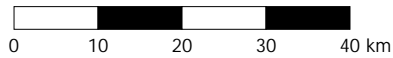
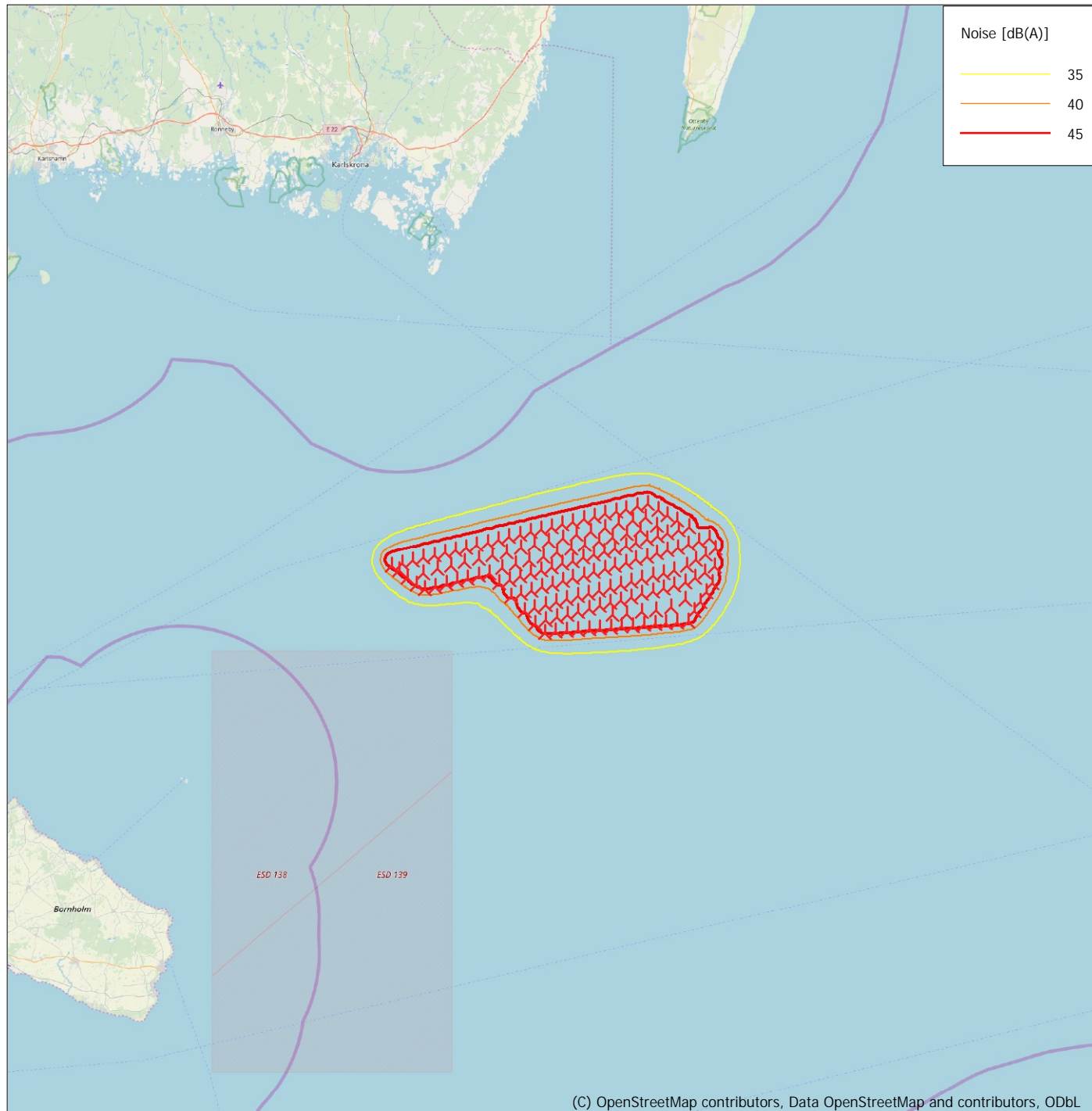
Noise: 115.4 dBa

Source	Source/Date	Creator	Edited
	2021-09-13	USER	2021-09-13 13:26

Status	Hub height [m]	Wind speed [m/s]	LwA,ref [dB(A)]	Pure tones	Octave data							
					63 [dB]	125 [dB]	250 [dB]	500 [dB]	1000 [dB]	2000 [dB]	4000 [dB]	8000 [dB]
From Windcat	160.0	6.0	115.2	No	94.1	102.8	107.5	109.5	109.6	108.3	96.1	81.4
From Windcat	160.0	8.0	115.2	No	94.1	102.8	107.5	109.5	109.6	108.3	96.1	81.4

DECIBEL - Map 8.0 m/s

Calculation: Danish Offshore



Map: EMD OpenStreetMap , Print scale 1:900 000, Map center Swedish UTM 33-SWREF99 (SE) East: 567 943 North: 6 163 502

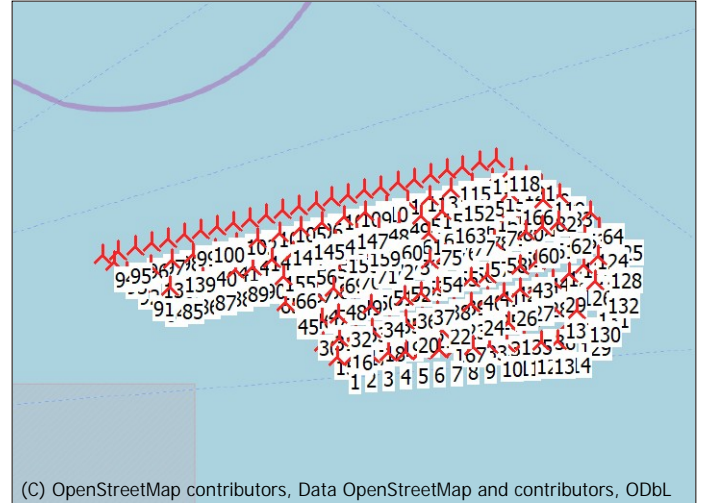
New WTG

Noise calculation model: Danish 2019. Wind speed: 8.0 m/s
Height above sea level from active line object

NORD2000 - Main Result

Assumptions

Weather stability	70.0 %
Relative humidity	15.0 °C
Air temperature	2.0 m
Height for air temperature	Night: Clear sky
Stability parameters	0.0100
Inverse Monin Obukhov length	0.0500
Temperature scale T*	
Terrain	
Flat area with fixed elevation	0.0 m above sea level
Uniform roughness length	0.0010 m
Uniform roughness class	0.3
Uniform terrain type	G
Wind speed criteria	
Uniform wind speed at 10 m agl.	8.0 m/s
Wind speed	0.0 ° - 330.0 ° - 30.0 °
Wind direction	1.5 m
Height above ground level for receiver	
Wind speed has been extrapolated to calculation height using IEC profile shear (z0 = 0.05m)	
No stability correction	
Version	6.005



▲ New WTG

Scale 1:750 000

All coordinates are in Swedish UTM 33-SWREF99 (SE)

WTGs

	Easting	Northing	Z	Row data/Description	WTG type		Type-generator	Power, rated [kW]	Rotor diameter [m]	Hub height [m]	Noise data		Wind speed [m/s]	LwA,ref [dB(A)]
					Valid	Manufact.					Creator	Name		
1	566 743	6 153 521	-78.4	MODERNENERGY ME263-2...Yes	MODERNENERGY	ME263-20-20 000	20 000	263.0	160.0	USER	115.4 dBa	12.2	115.2	
2	568 434	6 153 680	-77.6	MODERNENERGY ME263-2...Yes	MODERNENERGY	ME263-20-20 000	20 000	263.0	160.0	USER	115.4 dBa	12.2	115.2	
3	570 125	6 153 840	-76.4	MODERNENERGY ME263-2...Yes	MODERNENERGY	ME263-20-20 000	20 000	263.0	160.0	USER	115.4 dBa	12.2	115.2	
4	571 815	6 153 999	-75.2	MODERNENERGY ME263-2...Yes	MODERNENERGY	ME263-20-20 000	20 000	263.0	160.0	USER	115.4 dBa	12.2	115.2	
5	573 506	6 154 158	-77.1	MODERNENERGY ME263-2...Yes	MODERNENERGY	ME263-20-20 000	20 000	263.0	160.0	USER	115.4 dBa	12.2	115.2	
6	575 197	6 154 317	-75.5	MODERNENERGY ME263-2...Yes	MODERNENERGY	ME263-20-20 000	20 000	263.0	160.0	USER	115.4 dBa	12.2	115.2	
7	576 887	6 154 476	-73.4	MODERNENERGY ME263-2...Yes	MODERNENERGY	ME263-20-20 000	20 000	263.0	160.0	USER	115.4 dBa	12.2	115.2	
8	578 578	6 154 635	-73.9	MODERNENERGY ME263-2...Yes	MODERNENERGY	ME263-20-20 000	20 000	263.0	160.0	USER	115.4 dBa	12.2	115.2	
9	580 269	6 154 794	-74.1	MODERNENERGY ME263-2...Yes	MODERNENERGY	ME263-20-20 000	20 000	263.0	160.0	USER	115.4 dBa	12.2	115.2	
10	581 960	6 154 953	-72.8	MODERNENERGY ME263-2...Yes	MODERNENERGY	ME263-20-20 000	20 000	263.0	160.0	USER	115.4 dBa	12.2	115.2	
11	583 651	6 155 113	-71.1	MODERNENERGY ME263-2...Yes	MODERNENERGY	ME263-20-20 000	20 000	263.0	160.0	USER	115.4 dBa	12.2	115.2	
12	585 341	6 155 272	-71.3	MODERNENERGY ME263-2...Yes	MODERNENERGY	ME263-20-20 000	20 000	263.0	160.0	USER	115.4 dBa	12.2	115.2	
13	587 032	6 155 431	-70.8	MODERNENERGY ME263-2...Yes	MODERNENERGY	ME263-20-20 000	20 000	263.0	160.0	USER	115.4 dBa	12.2	115.2	
14	588 723	6 155 590	-68.8	MODERNENERGY ME263-2...Yes	MODERNENERGY	ME263-20-20 000	20 000	263.0	160.0	USER	115.4 dBa	12.2	115.2	
15	565 292	6 154 927	-79.0	MODERNENERGY ME263-2...Yes	MODERNENERGY	ME263-20-20 000	20 000	263.0	160.0	USER	115.4 dBa	12.2	115.2	
16	566 924	6 155 395	-78.1	MODERNENERGY ME263-2...Yes	MODERNENERGY	ME263-20-20 000	20 000	263.0	160.0	USER	115.4 dBa	12.2	115.2	
17	568 556	6 155 864	-78.6	MODERNENERGY ME263-2...Yes	MODERNENERGY	ME263-20-20 000	20 000	263.0	160.0	USER	115.4 dBa	12.2	115.2	
18	570 188	6 156 332	-76.4	MODERNENERGY ME263-2...Yes	MODERNENERGY	ME263-20-20 000	20 000	263.0	160.0	USER	115.4 dBa	12.2	115.2	
19	571 820	6 156 800	-76.3	MODERNENERGY ME263-2...Yes	MODERNENERGY	ME263-20-20 000	20 000	263.0	160.0	USER	115.4 dBa	12.2	115.2	
20	573 453	6 157 269	-76.9	MODERNENERGY ME263-2...Yes	MODERNENERGY	ME263-20-20 000	20 000	263.0	160.0	USER	115.4 dBa	12.2	115.2	
21	575 085	6 157 737	-76.9	MODERNENERGY ME263-2...Yes	MODERNENERGY	ME263-20-20 000	20 000	263.0	160.0	USER	115.4 dBa	12.2	115.2	
22	576 717	6 158 206	-75.3	MODERNENERGY ME263-2...Yes	MODERNENERGY	ME263-20-20 000	20 000	263.0	160.0	USER	115.4 dBa	12.2	115.2	
23	578 350	6 158 674	-73.9	MODERNENERGY ME263-2...Yes	MODERNENERGY	ME263-20-20 000	20 000	263.0	160.0	USER	115.4 dBa	12.2	115.2	
24	579 982	6 159 143	-72.3	MODERNENERGY ME263-2...Yes	MODERNENERGY	ME263-20-20 000	20 000	263.0	160.0	USER	115.4 dBa	12.2	115.2	
25	581 615	6 159 611	-71.1	MODERNENERGY ME263-2...Yes	MODERNENERGY	ME263-20-20 000	20 000	263.0	160.0	USER	115.4 dBa	12.2	115.2	
26	583 247	6 160 079	-69.5	MODERNENERGY ME263-2...Yes	MODERNENERGY	ME263-20-20 000	20 000	263.0	160.0	USER	115.4 dBa	12.2	115.2	
27	584 879	6 160 548	-69.3	MODERNENERGY ME263-2...Yes	MODERNENERGY	ME263-20-20 000	20 000	263.0	160.0	USER	115.4 dBa	12.2	115.2	
28	586 512	6 161 016	-68.9	MODERNENERGY ME263-2...Yes	MODERNENERGY	ME263-20-20 000	20 000	263.0	160.0	USER	115.4 dBa	12.2	115.2	
29	588 144	6 161 485	-68.3	MODERNENERGY ME263-2...Yes	MODERNENERGY	ME263-20-20 000	20 000	263.0	160.0	USER	115.4 dBa	12.2	115.2	
30	563 574	6 156 803	-80.9	MODERNENERGY ME263-2...Yes	MODERNENERGY	ME263-20-20 000	20 000	263.0	160.0	USER	115.4 dBa	12.2	115.2	
31	565 206	6 157 271	-78.1	MODERNENERGY ME263-2...Yes	MODERNENERGY	ME263-20-20 000	20 000	263.0	160.0	USER	115.4 dBa	12.2	115.2	
32	566 838	6 157 740	-77.1	MODERNENERGY ME263-2...Yes	MODERNENERGY	ME263-20-20 000	20 000	263.0	160.0	USER	115.4 dBa	12.2	115.2	
33	568 471	6 158 208	-76.2	MODERNENERGY ME263-2...Yes	MODERNENERGY	ME263-20-20 000	20 000	263.0	160.0	USER	115.4 dBa	12.2	115.2	
34	570 103	6 158 677	-74.5	MODERNENERGY ME263-2...Yes	MODERNENERGY	ME263-20-20 000	20 000	263.0	160.0	USER	115.4 dBa	12.2	115.2	
35	571 735	6 159 145	-75.7	MODERNENERGY ME263-2...Yes	MODERNENERGY	ME263-20-20 000	20 000	263.0	160.0	USER	115.4 dBa	12.2	115.2	
36	573 367	6 159 613	-76.0	MODERNENERGY ME263-2...Yes	MODERNENERGY	ME263-20-20 000	20 000	263.0	160.0	USER	115.4 dBa	12.2	115.2	
37	575 000	6 160 082	-75.1	MODERNENERGY ME263-2...Yes	MODERNENERGY	ME263-20-20 000	20 000	263.0	160.0	USER	115.4 dBa	12.2	115.2	
38	576 632	6 160 550	-73.6	MODERNENERGY ME263-2...Yes	MODERNENERGY	ME263-20-20 000	20 000	263.0	160.0	USER	115.4 dBa	12.2	115.2	

To be continued on next page...

NORD2000 - Main Result

...continued from previous page

	Easting	Northing	Z	Row data/Description	WTG type		Type-generator	Power, rated [kW]	Rotor diameter [m]	Hub height [m]	Noise data		Wind speed [m/s]	LwA,ref [dB(A)]
					Valid	Manufact.					Creator	Name		
39	578 264	6 161 019	-72.4	MODERNENERGY ME263-2...Yes	MODERNENERGY	ME263-20-20 000	20 000	263.0	160.0	USER	115.4 dBa	12.2	115.2	
40	579 897	6 161 487	-71.9	MODERNENERGY ME263-2...Yes	MODERNENERGY	ME263-20-20 000	20 000	263.0	160.0	USER	115.4 dBa	12.2	115.2	
41	581 529	6 161 956	-71.5	MODERNENERGY ME263-2...Yes	MODERNENERGY	ME263-20-20 000	20 000	263.0	160.0	USER	115.4 dBa	12.2	115.2	
42	583 161	6 162 424	-69.5	MODERNENERGY ME263-2...Yes	MODERNENERGY	ME263-20-20 000	20 000	263.0	160.0	USER	115.4 dBa	12.2	115.2	
43	584 794	6 162 893	-68.0	MODERNENERGY ME263-2...Yes	MODERNENERGY	ME263-20-20 000	20 000	263.0	160.0	USER	115.4 dBa	12.2	115.2	
44	586 426	6 163 361	-65.8	MODERNENERGY ME263-2...Yes	MODERNENERGY	ME263-20-20 000	20 000	263.0	160.0	USER	115.4 dBa	12.2	115.2	
45	561 465	6 158 892	-77.7	MODERNENERGY ME263-2...Yes	MODERNENERGY	ME263-20-20 000	20 000	263.0	160.0	USER	115.4 dBa	12.2	115.2	
46	563 057	6 159 391	-77.3	MODERNENERGY ME263-2...Yes	MODERNENERGY	ME263-20-20 000	20 000	263.0	160.0	USER	115.4 dBa	12.2	115.2	
47	564 648	6 159 890	-76.1	MODERNENERGY ME263-2...Yes	MODERNENERGY	ME263-20-20 000	20 000	263.0	160.0	USER	115.4 dBa	12.2	115.2	
48	566 240	6 160 389	-75.6	MODERNENERGY ME263-2...Yes	MODERNENERGY	ME263-20-20 000	20 000	263.0	160.0	USER	115.4 dBa	12.2	115.2	
49	567 832	6 160 888	-74.7	MODERNENERGY ME263-2...Yes	MODERNENERGY	ME263-20-20 000	20 000	263.0	160.0	USER	115.4 dBa	12.2	115.2	
50	569 424	6 161 387	-75.5	MODERNENERGY ME263-2...Yes	MODERNENERGY	ME263-20-20 000	20 000	263.0	160.0	USER	115.4 dBa	12.2	115.2	
51	571 015	6 161 886	-74.8	MODERNENERGY ME263-2...Yes	MODERNENERGY	ME263-20-20 000	20 000	263.0	160.0	USER	115.4 dBa	12.2	115.2	
52	572 607	6 162 385	-75.1	MODERNENERGY ME263-2...Yes	MODERNENERGY	ME263-20-20 000	20 000	263.0	160.0	USER	115.4 dBa	12.2	115.2	
53	574 199	6 162 884	-74.8	MODERNENERGY ME263-2...Yes	MODERNENERGY	ME263-20-20 000	20 000	263.0	160.0	USER	115.4 dBa	12.2	115.2	
54	575 791	6 163 383	-74.1	MODERNENERGY ME263-2...Yes	MODERNENERGY	ME263-20-20 000	20 000	263.0	160.0	USER	115.4 dBa	12.2	115.2	
55	577 383	6 163 883	-73.3	MODERNENERGY ME263-2...Yes	MODERNENERGY	ME263-20-20 000	20 000	263.0	160.0	USER	115.4 dBa	12.2	115.2	
56	578 974	6 164 382	-73.9	MODERNENERGY ME263-2...Yes	MODERNENERGY	ME263-20-20 000	20 000	263.0	160.0	USER	115.4 dBa	12.2	115.2	
57	580 566	6 164 881	-72.0	MODERNENERGY ME263-2...Yes	MODERNENERGY	ME263-20-20 000	20 000	263.0	160.0	USER	115.4 dBa	12.2	115.2	
58	582 158	6 165 380	-72.1	MODERNENERGY ME263-2...Yes	MODERNENERGY	ME263-20-20 000	20 000	263.0	160.0	USER	115.4 dBa	12.2	115.2	
59	583 750	6 165 879	-71.3	MODERNENERGY ME263-2...Yes	MODERNENERGY	ME263-20-20 000	20 000	263.0	160.0	USER	115.4 dBa	12.2	115.2	
60	585 342	6 166 378	-68.9	MODERNENERGY ME263-2...Yes	MODERNENERGY	ME263-20-20 000	20 000	263.0	160.0	USER	115.4 dBa	12.2	115.2	
61	586 934	6 166 877	-67.1	MODERNENERGY ME263-2...Yes	MODERNENERGY	ME263-20-20 000	20 000	263.0	160.0	USER	115.4 dBa	12.2	115.2	
62	588 526	6 167 377	-64.7	MODERNENERGY ME263-2...Yes	MODERNENERGY	ME263-20-20 000	20 000	263.0	160.0	USER	115.4 dBa	12.2	115.2	
63	590 118	6 167 876	-61.7	MODERNENERGY ME263-2...Yes	MODERNENERGY	ME263-20-20 000	20 000	263.0	160.0	USER	115.4 dBa	12.2	115.2	
64	591 710	6 168 375	-61.8	MODERNENERGY ME263-2...Yes	MODERNENERGY	ME263-20-20 000	20 000	263.0	160.0	USER	115.4 dBa	12.2	115.2	
65	559 704	6 160 984	-77.7	MODERNENERGY ME263-2...Yes	MODERNENERGY	ME263-20-20 000	20 000	263.0	160.0	USER	115.4 dBa	12.2	115.2	
66	561 306	6 161 486	-79.3	MODERNENERGY ME263-2...Yes	MODERNENERGY	ME263-20-20 000	20 000	263.0	160.0	USER	115.4 dBa	12.2	115.2	
67	562 907	6 161 988	-75.4	MODERNENERGY ME263-2...Yes	MODERNENERGY	ME263-20-20 000	20 000	263.0	160.0	USER	115.4 dBa	12.2	115.2	
68	564 508	6 162 490	-74.7	MODERNENERGY ME263-2...Yes	MODERNENERGY	ME263-20-20 000	20 000	263.0	160.0	USER	115.4 dBa	12.2	115.2	
69	566 109	6 162 992	-74.2	MODERNENERGY ME263-2...Yes	MODERNENERGY	ME263-20-20 000	20 000	263.0	160.0	USER	115.4 dBa	12.2	115.2	
70	567 710	6 163 495	-73.8	MODERNENERGY ME263-2...Yes	MODERNENERGY	ME263-20-20 000	20 000	263.0	160.0	USER	115.4 dBa	12.2	115.2	
71	569 312	6 163 997	-73.7	MODERNENERGY ME263-2...Yes	MODERNENERGY	ME263-20-20 000	20 000	263.0	160.0	USER	115.4 dBa	12.2	115.2	
72	570 913	6 164 499	-73.1	MODERNENERGY ME263-2...Yes	MODERNENERGY	ME263-20-20 000	20 000	263.0	160.0	USER	115.4 dBa	12.2	115.2	
73	572 514	6 165 001	-72.5	MODERNENERGY ME263-2...Yes	MODERNENERGY	ME263-20-20 000	20 000	263.0	160.0	USER	115.4 dBa	12.2	115.2	
74	574 116	6 165 503	-72.5	MODERNENERGY ME263-2...Yes	MODERNENERGY	ME263-20-20 000	20 000	263.0	160.0	USER	115.4 dBa	12.2	115.2	
75	575 717	6 166 005	-73.3	MODERNENERGY ME263-2...Yes	MODERNENERGY	ME263-20-20 000	20 000	263.0	160.0	USER	115.4 dBa	12.2	115.2	
76	577 318	6 166 507	-72.2	MODERNENERGY ME263-2...Yes	MODERNENERGY	ME263-20-20 000	20 000	263.0	160.0	USER	115.4 dBa	12.2	115.2	
77	578 920	6 167 009	-70.8	MODERNENERGY ME263-2...Yes	MODERNENERGY	ME263-20-20 000	20 000	263.0	160.0	USER	115.4 dBa	12.2	115.2	
78	580 521	6 167 512	-70.3	MODERNENERGY ME263-2...Yes	MODERNENERGY	ME263-20-20 000	20 000	263.0	160.0	USER	115.4 dBa	12.2	115.2	
79	582 123	6 168 014	-70.9	MODERNENERGY ME263-2...Yes	MODERNENERGY	ME263-20-20 000	20 000	263.0	160.0	USER	115.4 dBa	12.2	115.2	
80	583 724	6 168 516	-72.1	MODERNENERGY ME263-2...Yes	MODERNENERGY	ME263-20-20 000	20 000	263.0	160.0	USER	115.4 dBa	12.2	115.2	
81	585 326	6 169 018	-69.3	MODERNENERGY ME263-2...Yes	MODERNENERGY	ME263-20-20 000	20 000	263.0	160.0	USER	115.4 dBa	12.2	115.2	
82	586 927	6 169 520	-66.6	MODERNENERGY ME263-2...Yes	MODERNENERGY	ME263-20-20 000	20 000	263.0	160.0	USER	115.4 dBa	12.2	115.2	
83	588 529	6 170 023	-66.4	MODERNENERGY ME263-2...Yes	MODERNENERGY	ME263-20-20 000	20 000	263.0	160.0	USER	115.4 dBa	12.2	115.2	
84	548 304	6 159 919	-74.3	MODERNENERGY ME263-2...Yes	MODERNENERGY	ME263-20-20 000	20 000	263.0	160.0	USER	115.4 dBa	12.2	115.2	
85	549 951	6 160 333	-74.3	MODERNENERGY ME263-2...Yes	MODERNENERGY	ME263-20-20 000	20 000	263.0	160.0	USER	115.4 dBa	12.2	115.2	
86	551 597	6 160 747	-74.7	MODERNENERGY ME263-2...Yes	MODERNENERGY	ME263-20-20 000	20 000	263.0	160.0	USER	115.4 dBa	12.2	115.2	
87	553 244	6 161 160	-76.6	MODERNENERGY ME263-2...Yes	MODERNENERGY	ME263-20-20 000	20 000	263.0	160.0	USER	115.4 dBa	12.2	115.2	
88	554 891	6 161 574	-76.7	MODERNENERGY ME263-2...Yes	MODERNENERGY	ME263-20-20 000	20 000	263.0	160.0	USER	115.4 dBa	12.2	115.2	
89	556 538	6 161 987	-76.0	MODERNENERGY ME263-2...Yes	MODERNENERGY	ME263-20-20 000	20 000	263.0	160.0	USER	115.4 dBa	12.2	115.2	
90	558 184	6 162 401	-76.2	MODERNENERGY ME263-2...Yes	MODERNENERGY	ME263-20-20 000	20 000	263.0	160.0	USER	115.4 dBa	12.2	115.2	
91	547 115	6 160 572	-74.0	MODERNENERGY ME263-2...Yes	MODERNENERGY	ME263-20-20 000	20 000	263.0	160.0	USER	115.4 dBa	12.2	115.2	
92	545 760	6 161 595	-71.9	MODERNENERGY ME263-2...Yes	MODERNENERGY	ME263-20-20 000	20 000	263.0	160.0	USER	115.4 dBa	12.2	115.2	
93	544 405	6 162 618	-68.2	MODERNENERGY ME263-2...Yes	MODERNENERGY	ME263-20-20 000	20 000	263.0	160.0	USER	115.4 dBa	12.2	115.2	
94	543 235	6 163 381	-67.7	MODERNENERGY ME263-2...Yes	MODERNENERGY	ME263-20-20 000	20 000	263.0	160.0	USER	115.4 dBa	12.2	115.2	
95	544 859	6 163 802	-67.8	MODERNENERGY ME263-2...Yes	MODERNENERGY	ME263-20-20 000	20 000	263.0	160.0	USER	115.4 dBa	12.2	115.2	
96	546 483	6 164 223	-68.3	MODERNENERGY ME263-2...Yes	MODERNENERGY	ME263-20-20 000	20 000	263.0	160.0	USER	115.4 dBa	12.2	115.2	
97	548 107	6 164 644	-68.9	MODERNENERGY ME263-2...Yes	MODERNENERGY	ME263-20-20 000	20 000	263.0	160.0	USER	115.4 dBa	12.2	115.2	
98	549 731	6 165 064	-69.9	MODERNENERGY ME263-2...Yes	MODERNENERGY	ME263-20-20 000	20 000	263.0	160.0	USER	115.4 dBa	12.2	115.2	
99	551 356	6 165 485	-71.1	MODERNENERGY ME263-2...Yes	MODERNENERGY	ME263-20-20 000	20 000	263.0	160.0	USER	115.4 dBa	12.2	115.2	
100	552 980	6 165 906	-71.7	MODERNENERGY ME263-2...Yes	MODERNENERGY	ME263-20-20 000	20 000	263.0	160.0	USER	115.4 dBa	12.2	115.2	
101	554 604	6 166 327	-70.8	MODERNENERGY ME263-2...Yes	MODERNENERGY	ME263-20-20 000	20 000	263.0	160.0	USER	115.4 dBa	12.2	115.2	
102	556 228	6 166 748	-71.2	MODERNENERGY ME263-2...Yes	MODERNENERGY	ME263-20-20 000	20 000	263.0	160.0	USER	115.4 dBa	12.2	115.2	
103	557 853	6 167 169	-72.2	MODERNENERGY ME263-2...Yes	MODERNENERGY	ME263-20-20 000	20 000	263.0	160.0	USER	115.4 dBa	12.2	115.2	

To be continued on next page...

NORD2000 - Main Result

...continued from previous page

	Easting	Northing	Z	Row data/Description	WTG type		Type-generator	Power, rated [kW]	Rotor diameter [m]	Hub height [m]	Noise data		Wind speed [m/s]	LwA,ref [dB(A)]
					Valid	Manufact.					Creator	Name		
104	559 477	6 167 590	-72.0	MODERNENERGY ME263-2...Yes	MODERNENERGY	ME263-20-20 000	20 000	263.0	160.0	USER	115.4 dBa	12.2	115.2	
105	561 101	6 168 011	-72.0	MODERNENERGY ME263-2...Yes	MODERNENERGY	ME263-20-20 000	20 000	263.0	160.0	USER	115.4 dBa	12.2	115.2	
106	562 726	6 168 431	-71.5	MODERNENERGY ME263-2...Yes	MODERNENERGY	ME263-20-20 000	20 000	263.0	160.0	USER	115.4 dBa	12.2	115.2	
107	564 350	6 168 852	-71.2	MODERNENERGY ME263-2...Yes	MODERNENERGY	ME263-20-20 000	20 000	263.0	160.0	USER	115.4 dBa	12.2	115.2	
108	565 975	6 169 273	-70.9	MODERNENERGY ME263-2...Yes	MODERNENERGY	ME263-20-20 000	20 000	263.0	160.0	USER	115.4 dBa	12.2	115.2	
109	567 599	6 169 694	-69.8	MODERNENERGY ME263-2...Yes	MODERNENERGY	ME263-20-20 000	20 000	263.0	160.0	USER	115.4 dBa	12.2	115.2	
110	569 223	6 170 115	-69.5	MODERNENERGY ME263-2...Yes	MODERNENERGY	ME263-20-20 000	20 000	263.0	160.0	USER	115.4 dBa	12.2	115.2	
111	570 848	6 170 536	-69.0	MODERNENERGY ME263-2...Yes	MODERNENERGY	ME263-20-20 000	20 000	263.0	160.0	USER	115.4 dBa	12.2	115.2	
112	572 472	6 170 957	-68.7	MODERNENERGY ME263-2...Yes	MODERNENERGY	ME263-20-20 000	20 000	263.0	160.0	USER	115.4 dBa	12.2	115.2	
113	574 097	6 171 378	-68.1	MODERNENERGY ME263-2...Yes	MODERNENERGY	ME263-20-20 000	20 000	263.0	160.0	USER	115.4 dBa	12.2	115.2	
114	575 722	6 171 799	-68.0	MODERNENERGY ME263-2...Yes	MODERNENERGY	ME263-20-20 000	20 000	263.0	160.0	USER	115.4 dBa	12.2	115.2	
115	577 346	6 172 220	-67.5	MODERNENERGY ME263-2...Yes	MODERNENERGY	ME263-20-20 000	20 000	263.0	160.0	USER	115.4 dBa	12.2	115.2	
116	578 971	6 172 641	-67.4	MODERNENERGY ME263-2...Yes	MODERNENERGY	ME263-20-20 000	20 000	263.0	160.0	USER	115.4 dBa	12.2	115.2	
117	580 595	6 173 062	-66.8	MODERNENERGY ME263-2...Yes	MODERNENERGY	ME263-20-20 000	20 000	263.0	160.0	USER	115.4 dBa	12.2	115.2	
118	582 220	6 173 484	-66.6	MODERNENERGY ME263-2...Yes	MODERNENERGY	ME263-20-20 000	20 000	263.0	160.0	USER	115.4 dBa	12.2	115.2	
119	586 775	6 170 959	-67.3	MODERNENERGY ME263-2...Yes	MODERNENERGY	ME263-20-20 000	20 000	263.0	160.0	USER	115.4 dBa	12.2	115.2	
120	585 283	6 171 771	-67.4	MODERNENERGY ME263-2...Yes	MODERNENERGY	ME263-20-20 000	20 000	263.0	160.0	USER	115.4 dBa	12.2	115.2	
121	583 792	6 172 583	-67.1	MODERNENERGY ME263-2...Yes	MODERNENERGY	ME263-20-20 000	20 000	263.0	160.0	USER	115.4 dBa	12.2	115.2	
122	588 297	6 164 145	-61.0	MODERNENERGY ME263-2...Yes	MODERNENERGY	ME263-20-20 000	20 000	263.0	160.0	USER	115.4 dBa	12.2	115.2	
123	589 748	6 165 027	-55.0	MODERNENERGY ME263-2...Yes	MODERNENERGY	ME263-20-20 000	20 000	263.0	160.0	USER	115.4 dBa	12.2	115.2	
124	591 200	6 165 909	-58.1	MODERNENERGY ME263-2...Yes	MODERNENERGY	ME263-20-20 000	20 000	263.0	160.0	USER	115.4 dBa	12.2	115.2	
125	592 651	6 166 791	-58.7	MODERNENERGY ME263-2...Yes	MODERNENERGY	ME263-20-20 000	20 000	263.0	160.0	USER	115.4 dBa	12.2	115.2	
126	589 691	6 162 212	-66.6	MODERNENERGY ME263-2...Yes	MODERNENERGY	ME263-20-20 000	20 000	263.0	160.0	USER	115.4 dBa	12.2	115.2	
127	591 143	6 163 094	-64.9	MODERNENERGY ME263-2...Yes	MODERNENERGY	ME263-20-20 000	20 000	263.0	160.0	USER	115.4 dBa	12.2	115.2	
128	592 594	6 163 976	-63.6	MODERNENERGY ME263-2...Yes	MODERNENERGY	ME263-20-20 000	20 000	263.0	160.0	USER	115.4 dBa	12.2	115.2	
129	589 635	6 157 186	-69.2	MODERNENERGY ME263-2...Yes	MODERNENERGY	ME263-20-20 000	20 000	263.0	160.0	USER	115.4 dBa	12.2	115.2	
130	590 514	6 158 640	-68.8	MODERNENERGY ME263-2...Yes	MODERNENERGY	ME263-20-20 000	20 000	263.0	160.0	USER	115.4 dBa	12.2	115.2	
131	591 392	6 160 593	-69.1	MODERNENERGY ME263-2...Yes	MODERNENERGY	ME263-20-20 000	20 000	263.0	160.0	USER	115.4 dBa	12.2	115.2	
132	592 271	6 161 046	-66.8	MODERNENERGY ME263-2...Yes	MODERNENERGY	ME263-20-20 000	20 000	263.0	160.0	USER	115.4 dBa	12.2	115.2	
133	579 348	6 156 629	-73.4	MODERNENERGY ME263-2...Yes	MODERNENERGY	ME263-20-20 000	20 000	263.0	160.0	USER	115.4 dBa	12.2	115.2	
134	581 638	6 157 017	-72.8	MODERNENERGY ME263-2...Yes	MODERNENERGY	ME263-20-20 000	20 000	263.0	160.0	USER	115.4 dBa	12.2	115.2	
135	583 843	6 157 275	-70.6	MODERNENERGY ME263-2...Yes	MODERNENERGY	ME263-20-20 000	20 000	263.0	160.0	USER	115.4 dBa	12.2	115.2	
136	586 085	6 157 740	-71.3	MODERNENERGY ME263-2...Yes	MODERNENERGY	ME263-20-20 000	20 000	263.0	160.0	USER	115.4 dBa	12.2	115.2	
137	588 154	6 158 935	-69.8	MODERNENERGY ME263-2...Yes	MODERNENERGY	ME263-20-20 000	20 000	263.0	160.0	USER	115.4 dBa	12.2	115.2	
138	548 047	6 162 395	-71.2	MODERNENERGY ME263-2...Yes	MODERNENERGY	ME263-20-20 000	20 000	263.0	160.0	USER	115.4 dBa	12.2	115.2	
139	550 172	6 162 954	-71.1	MODERNENERGY ME263-2...Yes	MODERNENERGY	ME263-20-20 000	20 000	263.0	160.0	USER	115.4 dBa	12.2	115.2	
140	552 297	6 163 512	-73.4	MODERNENERGY ME263-2...Yes	MODERNENERGY	ME263-20-20 000	20 000	263.0	160.0	USER	115.4 dBa	12.2	115.2	
141	554 422	6 164 071	-74.4	MODERNENERGY ME263-2...Yes	MODERNENERGY	ME263-20-20 000	20 000	263.0	160.0	USER	115.4 dBa	12.2	115.2	
142	556 547	6 164 629	-73.0	MODERNENERGY ME263-2...Yes	MODERNENERGY	ME263-20-20 000	20 000	263.0	160.0	USER	115.4 dBa	12.2	115.2	
143	558 672	6 165 188	-74.4	MODERNENERGY ME263-2...Yes	MODERNENERGY	ME263-20-20 000	20 000	263.0	160.0	USER	115.4 dBa	12.2	115.2	
144	560 797	6 165 746	-73.9	MODERNENERGY ME263-2...Yes	MODERNENERGY	ME263-20-20 000	20 000	263.0	160.0	USER	115.4 dBa	12.2	115.2	
145	562 923	6 166 305	-72.3	MODERNENERGY ME263-2...Yes	MODERNENERGY	ME263-20-20 000	20 000	263.0	160.0	USER	115.4 dBa	12.2	115.2	
146	565 048	6 166 863	-72.0	MODERNENERGY ME263-2...Yes	MODERNENERGY	ME263-20-20 000	20 000	263.0	160.0	USER	115.4 dBa	12.2	115.2	
147	567 173	6 167 422	-71.0	MODERNENERGY ME263-2...Yes	MODERNENERGY	ME263-20-20 000	20 000	263.0	160.0	USER	115.4 dBa	12.2	115.2	
148	569 299	6 167 981	-70.4	MODERNENERGY ME263-2...Yes	MODERNENERGY	ME263-20-20 000	20 000	263.0	160.0	USER	115.4 dBa	12.2	115.2	
149	571 424	6 168 539	-70.5	MODERNENERGY ME263-2...Yes	MODERNENERGY	ME263-20-20 000	20 000	263.0	160.0	USER	115.4 dBa	12.2	115.2	
150	573 549	6 169 098	-69.6	MODERNENERGY ME263-2...Yes	MODERNENERGY	ME263-20-20 000	20 000	263.0	160.0	USER	115.4 dBa	12.2	115.2	
151	575 675	6 169 657	-69.5	MODERNENERGY ME263-2...Yes	MODERNENERGY	ME263-20-20 000	20 000	263.0	160.0	USER	115.4 dBa	12.2	115.2	
152	577 798	6 170 345	-68.3	MODERNENERGY ME263-2...Yes	MODERNENERGY	ME263-20-20 000	20 000	263.0	160.0	USER	115.4 dBa	12.2	115.2	
153	579 923	6 170 946	-68.2	MODERNENERGY ME263-2...Yes	MODERNENERGY	ME263-20-20 000	20 000	263.0	160.0	USER	115.4 dBa	12.2	115.2	
154	581 920	6 171 417	-68.7	MODERNENERGY ME263-2...Yes	MODERNENERGY	ME263-20-20 000	20 000	263.0	160.0	USER	115.4 dBa	12.2	115.2	
155	560 106	6 163 234	-76.1	MODERNENERGY ME263-2...Yes	MODERNENERGY	ME263-20-20 000	20 000	263.0	160.0	USER	115.4 dBa	12.2	115.2	
156	562 213	6 163 860	-74.3	MODERNENERGY ME263-2...Yes	MODERNENERGY	ME263-20-20 000	20 000	263.0	160.0	USER	115.4 dBa	12.2	115.2	
157	564 320	6 164 485	-73.8	MODERNENERGY ME263-2...Yes	MODERNENERGY	ME263-20-20 000	20 000	263.0	160.0	USER	115.4 dBa	12.2	115.2	
158	566 426	6 165 110	-73.3	MODERNENERGY ME263-2...Yes	MODERNENERGY	ME263-20-20 000	20 000	263.0	160.0	USER	115.4 dBa	12.2	115.2	
159	568 533	6 165 735	-71.9	MODERNENERGY ME263-2...Yes	MODERNENERGY	ME263-20-20 000	20 000	263.0	160.0	USER	115.4 dBa	12.2	115.2	
160	570 640	6 166 361	-72.0	MODERNENERGY ME263-2...Yes	MODERNENERGY	ME263-20-20 000	20 000	263.0	160.0	USER	115.4 dBa	12.2	115.2	
161	572 746	6 166 986	-70.9	MODERNENERGY ME263-2...Yes	MODERNENERGY	ME263-20-20 000	20 000	263.0	160.0	USER	115.4 dBa	12.2	115.2	
162	574 853	6 167 611	-70.5	MODERNENERGY ME263-2...Yes	MODERNENERGY	ME263-20-20 000	20 000	263.0	160.0	USER	115.4 dBa	12.2	115.2	
163	576 960	6 168 237	-70.0	MODERNENERGY ME263-2...Yes	MODERNENERGY	ME263-20-20 000	20 000	263.0	160.0	USER	115.4 dBa	12.2	115.2	
164	579 067	6 168 862	-69.2	MODERNENERGY ME263-2...Yes	MODERNENERGY	ME263-20-20 000	20 000	263.0	160.0	USER	115.4 dBa	12.2	115.2	
165	581 188	6 169 404	-69.0	MODERNENERGY ME263-2...Yes	MODERNENERGY	ME263-20-20 000	20 000	263.0	160.0	USER	115.4 dBa	12.2	115.2	
166	583 650	6 170 170	-70.8	MODERNENERGY ME263-2...Yes	MODERNENERGY	ME263-20-20 000	20 000	263.0	160.0	USER	115.4 dBa	12.2	115.2	
167	577 113	6 156 359	-73.5	MODERNENERGY ME263-2...Yes	MODERNENERGY	ME263-20-20 000	20 000	263.0	160.0	USER	115.4 dBa	12.2	115.2	

Calculation Results

Project:
Offshore_Beta

Licensed user:
Karlstad Modern Energy AB
Lantvärnsgatan 8
SE-65221 Karlstad
+46 702185064
Niklas Sondell / niklas.sondell@modernenergy.se
Calculated:
2021-09-13 14:08/3.5.552

NORD2000 - Main Result

Project:
Offshore_Beta

Licensed user:
Karlstad Modern Energy AB
Lantvårngatan 8
SE-65221 Karlstad
+46 702185064
Niklas Sondell / niklas.sondell@modernenergy.se
Calculated:
2021-09-13 14:08/3.5.552

NORD2000 - Assumptions for NORD2000 calculation

Assumptions

Weather stability
Relative humidity 70.0 %
Air temperature 15.0 °C
Height for air temperature 2.0 m
Stability parameters Night; Clear sky
Inverse Monin Obukhov length 0.0100
Temperature scale T* 0.0500

Terrain
Flat area with fixed elevation 0.0 m above sea level
Uniform roughness length 0.0010 m
Uniform roughness class 0.3
Uniform terrain type G

Wind speed criteria
Uniform wind speed at 10 m agl. 8.0 m/s
Wind speed 0.0 ° - 330.0 ° - 30.0 °
Wind direction 1.5 m
Height above ground level for receiver
Wind speed has been extrapolated to calculation height using IEC profile shear ($z_0 = 0.05\text{m}$)
No stability correction
Version 6.005

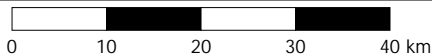
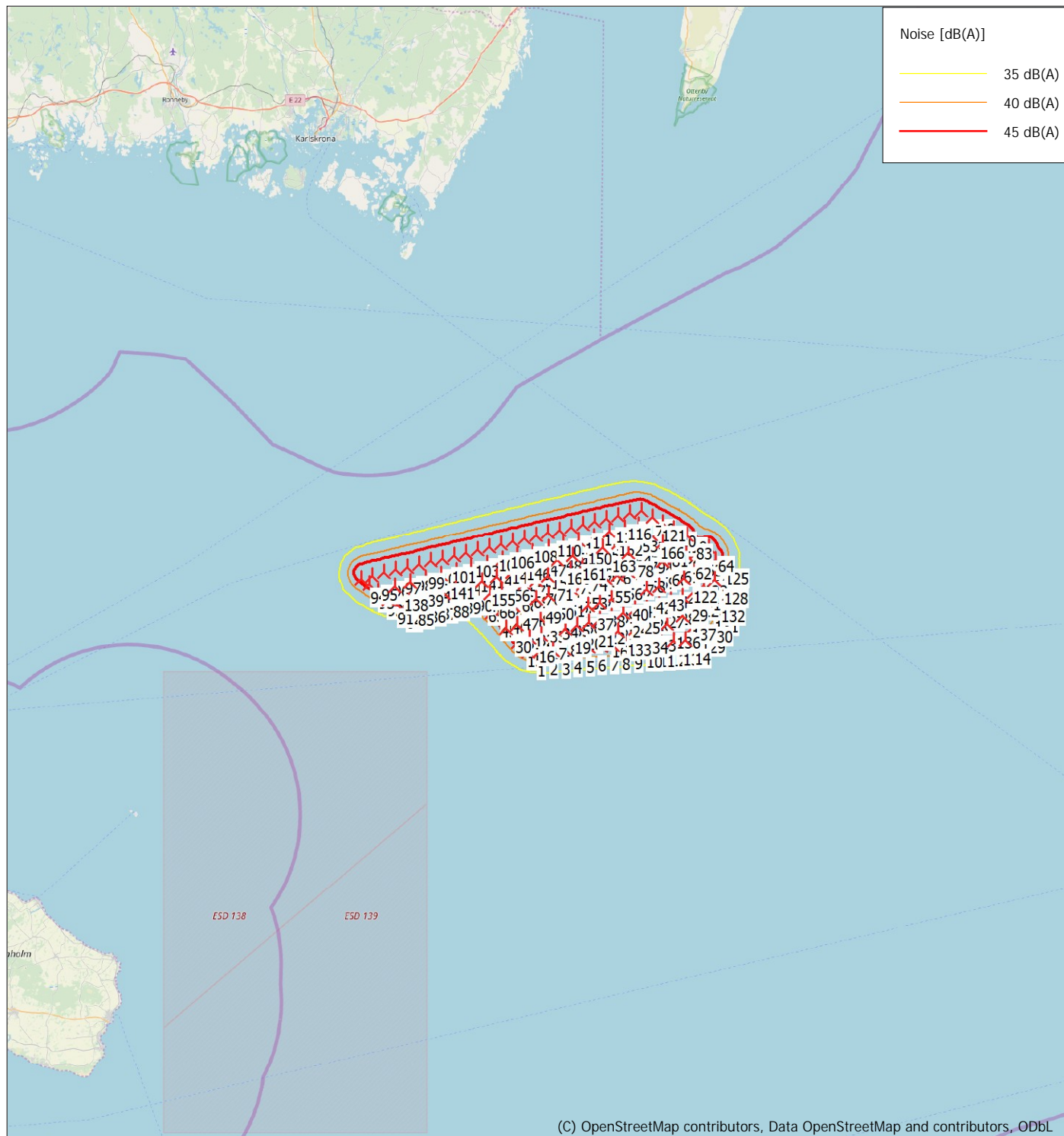
All coordinates are in
Swedish UTM 33-SWREF99 (SE)

WTG: MODERNENERGY ME263-20 20000 263.0 !O!
Noise: 115.4 dBA

Source	Source/Date	Creator	Edited
	2021-09-13	USER	2021-09-13 13:26

Wind speed [m/s]	LwA,ref [dB(A)]	Octave data							
		63 [dB(A)]	125 [dB(A)]	250 [dB(A)]	500 [dB(A)]	1000 [dB(A)]	2000 [dB(A)]	4000 [dB(A)]	8000 [dB(A)]
10.0	115.2	94.1	102.8	107.5	109.5	109.6	108.3	96.1	81.4
11.0	115.2	94.1	102.8	107.5	109.5	109.6	108.3	96.1	81.4
12.0	115.2	94.1	102.8	107.5	109.5	109.6	108.3	96.1	81.4

NORD2000 - 8.0 m/s



Map: EMD OpenStreetMap , Print scale 1:800 000, Map center Swedish UTM 33-SWREF99 (SE) East: 567 943 North: 6 163 502

New WTG